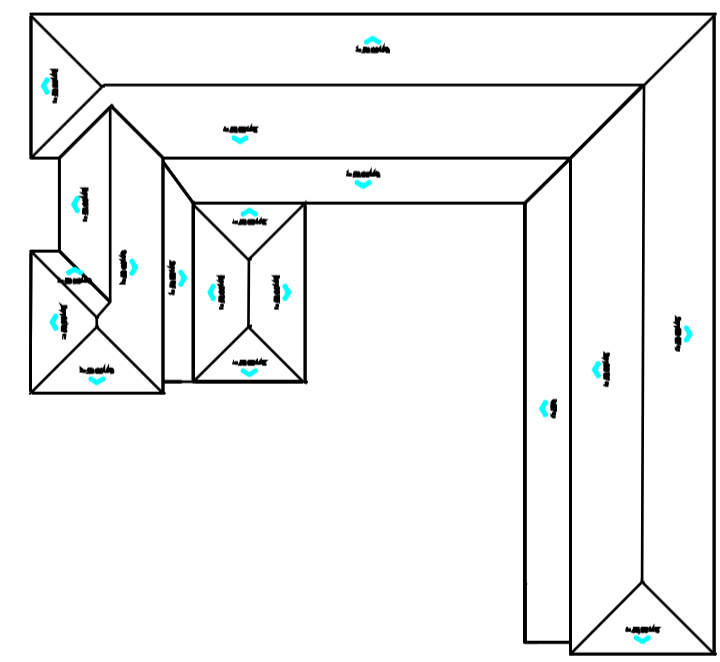
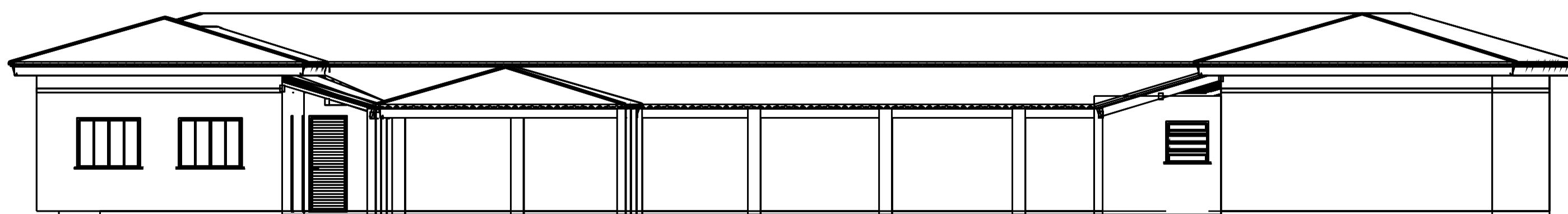


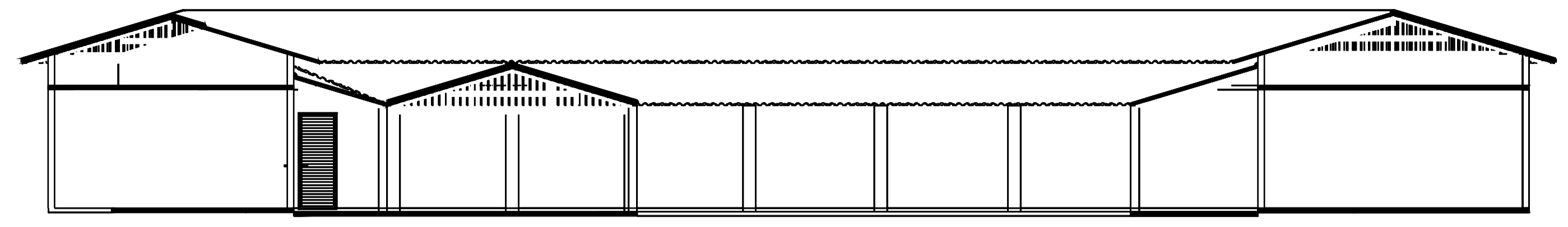
PLANTA BAIXA
Escala 1/50



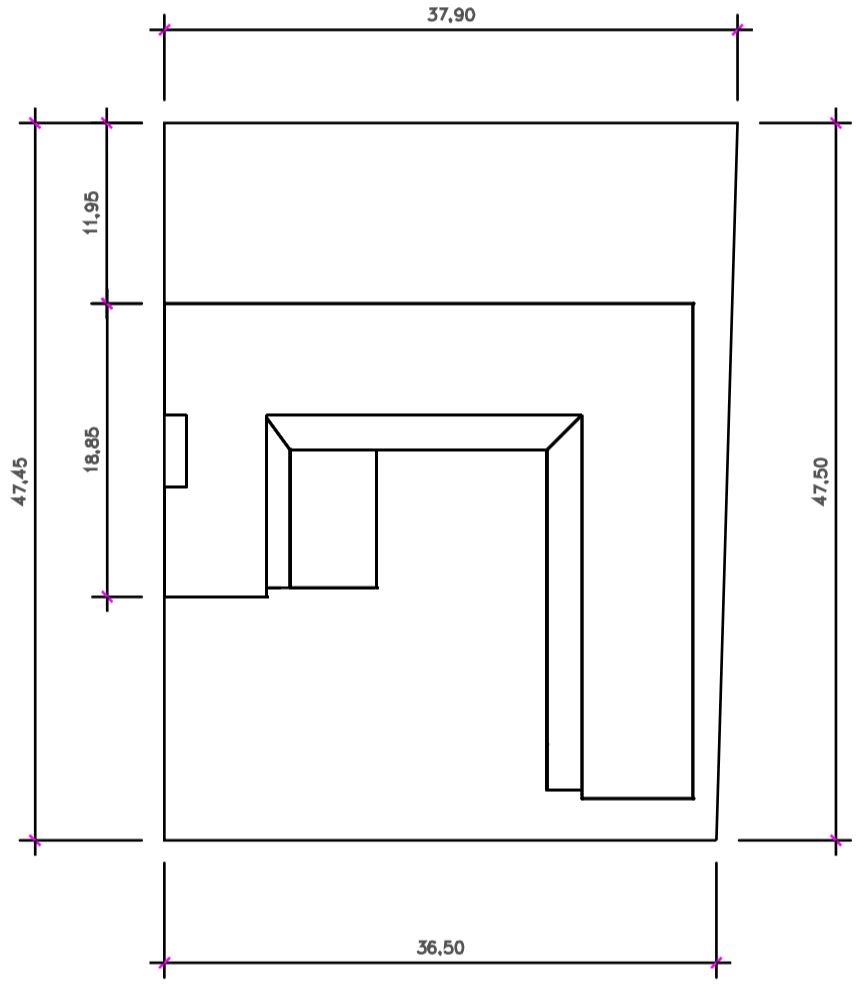
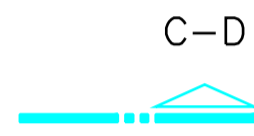
COBERTURA
Escala 1/200



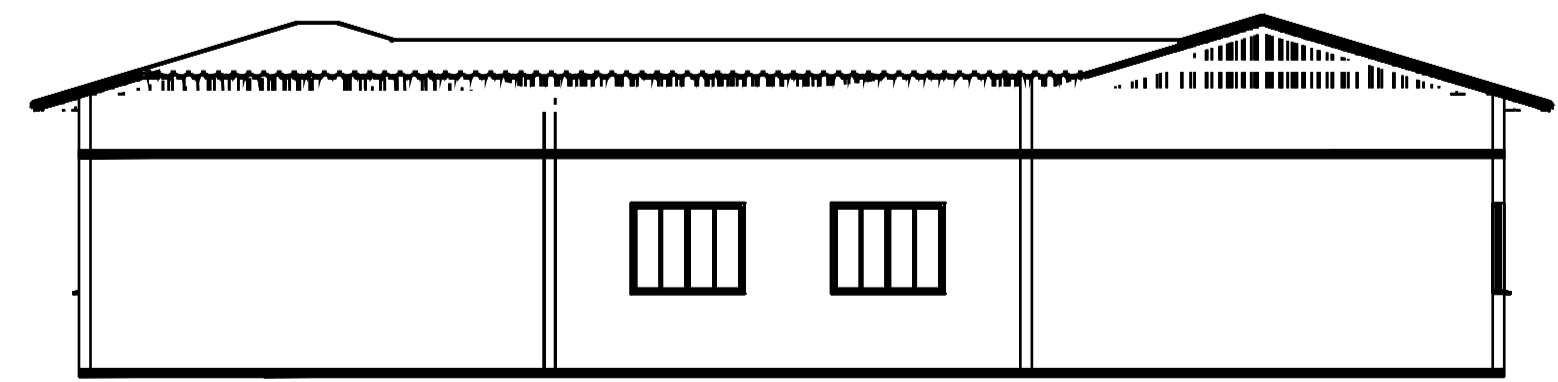
FACHADA
Escala 1/50



CORTE C-D
Escala 1/50



SITUAÇÃO
Escala 1/500



CORTE A-B
Escala 1/50

PREFEITURA MUNICIPAL DE CACHOEIRA DE MINAS			
PROJETO DE AMPLIAÇÃO			
LOCAL:	E.M. ANARDINA FRANCISCA DA COSTA		
ENDEREÇO	BAIRRO ALTO DAS CRUZES		
PREFEITO:	CARLOS EDUARDO TENÓRIO DIONÍSIO		
RESPONSÁVEL TÉCNICO:	ADRIANA BARBOSA SILVEIRA DIONÍSIO	CAU A 21530-9	
ESCALA	INDICADA	DATA:	03/10/2013
ÁREAS			
CONSTRUÍDA:	479,18 m ²	TERRENO:	1.765,14 m ²
A AMPLIAR:	190,00 m ²	T.O.	37,91%
TOTAL	669,18 m ²	C.A.	0,37